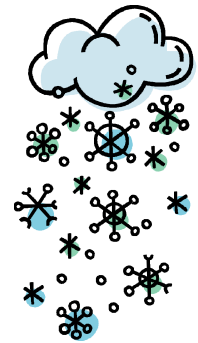


## SCHOOL CLOSINGS/DELAYS DUE TO SNOW/ICE ? ?

It certainly turned cold and snowy quickly! Although we can hope for a mild winter, we must be prepared to deal with whatever comes. Here's a brief reminder of the Saint Agnes weather policy:



- ✓ Saint Agnes School, Charleston Catholic High School, and Sacred Heart Grade School will NOT follow ANY of the Kanawha County Schools' weather-related procedures. (Note: This is a change from previous years.)
- ✓ Families will need to listen to the radio/television for changes to schedules. The following stations will be notified by 6:15 a.m. if there are changes to be made: WV Public Radio, WCHS, WCHS-TV, WSAZ-TV, V100, Kicks96, Super 102, WBES, WKAZ, and WQBE. School closings and delays are also announced on the school web site, [www.stagneswv.org](http://www.stagneswv.org). IF NO ANNOUNCEMENTS ARE MADE FOR SAINT AGNES SCHOOL, CLASSES WILL BE HELD ON THE REGULAR SCHEDULE.
- ✓ If a two-hour delay is announced, the bell will ring promptly at 10:10 a.m. The building WILL NOT OPEN UNTIL 9:30 to give staff time to get to school. Please DO NOT drop off your children BEFORE 9:30! If there is a 2 hour delay, the 4 year old Pre-School WILL NOT be in session that day.
- ✓ As always, if you cannot get your child to school for health or safety reasons, notify the school. The absence or tardy will be excused if it is due to inclement weather.
- ✓ St. Agnes School will not normally have an early dismissal due to weather. If you feel you need to pick your child up early, just follow the normal procedures of signing your child out. If unusual circumstances occur which require an early dismissal (power outage, etc.) we will call you.

Please Note: Mrs. Pat Fot makes weather related decisions for the CHILD DEVELOPMENT CENTER. She has shared her procedures with the parents. Radio and Television announcements for the Child Development Center and the School will be separate, so be sure to listen carefully!

